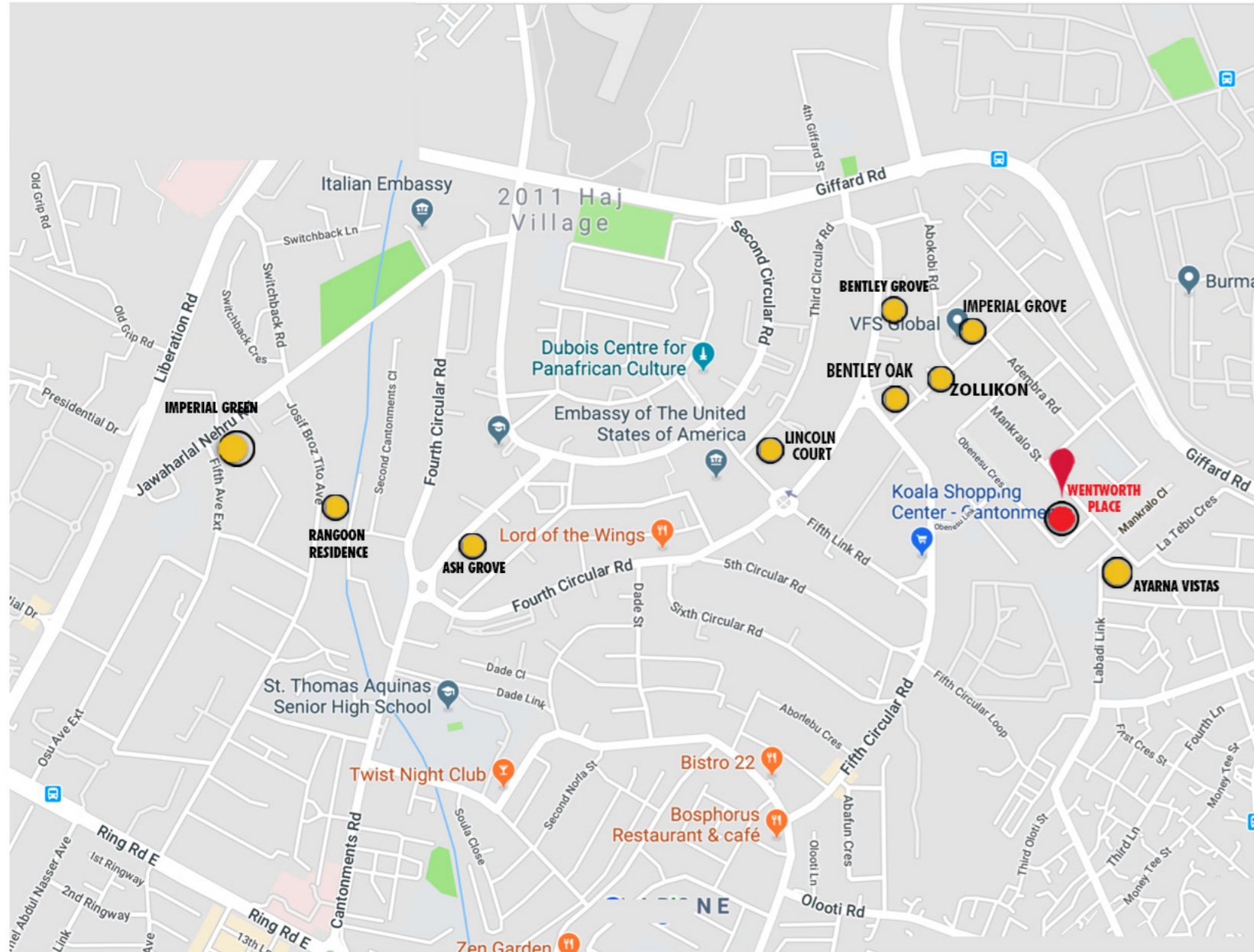


WENTWORTH PLACE

Obenesu Crescent, Cantonments, Accra







WENTWORTH PLACE

Obenesu Crescent, Cantonments, Accra

AN EXQUISITELY APPOINTED EXPRESSION OF LUXURY HOME LIVING
Each element of the houses represents a stunning showcase of craftsmanship and design.

Wentworth Place defines what contemporary luxury living should be. It's an understatedly-expressive combination of beauty, luxury, comfort and function. It delivers a refreshingly dynamic satisfying living experience. Every single detail is crafted to heighten your sense of tranquility and harmony. Along with state-of-the-art lighting and appliances, the 4-bedroom duplexes and 1 and 2 bedroom penthouses represent a titillating symphony of modern living in the befitting setting of Cantonments, Accra.



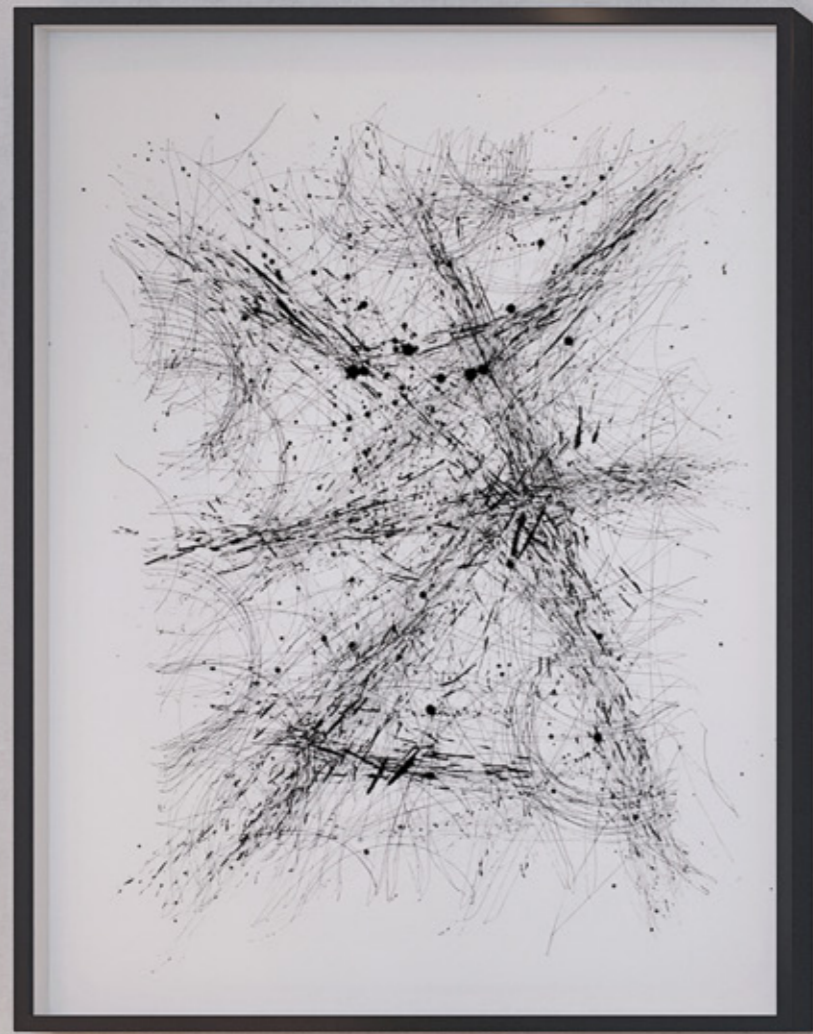




07

08





11

*Images displayed are indicative of the style only and the finished product may differ



12

*Images displayed are indicative of the style only and the finished product may differ



13

14



15

*Images displayed are indicative of the style only and the finished product may differ



16

*Images displayed are indicative of the style only and the finished product may differ



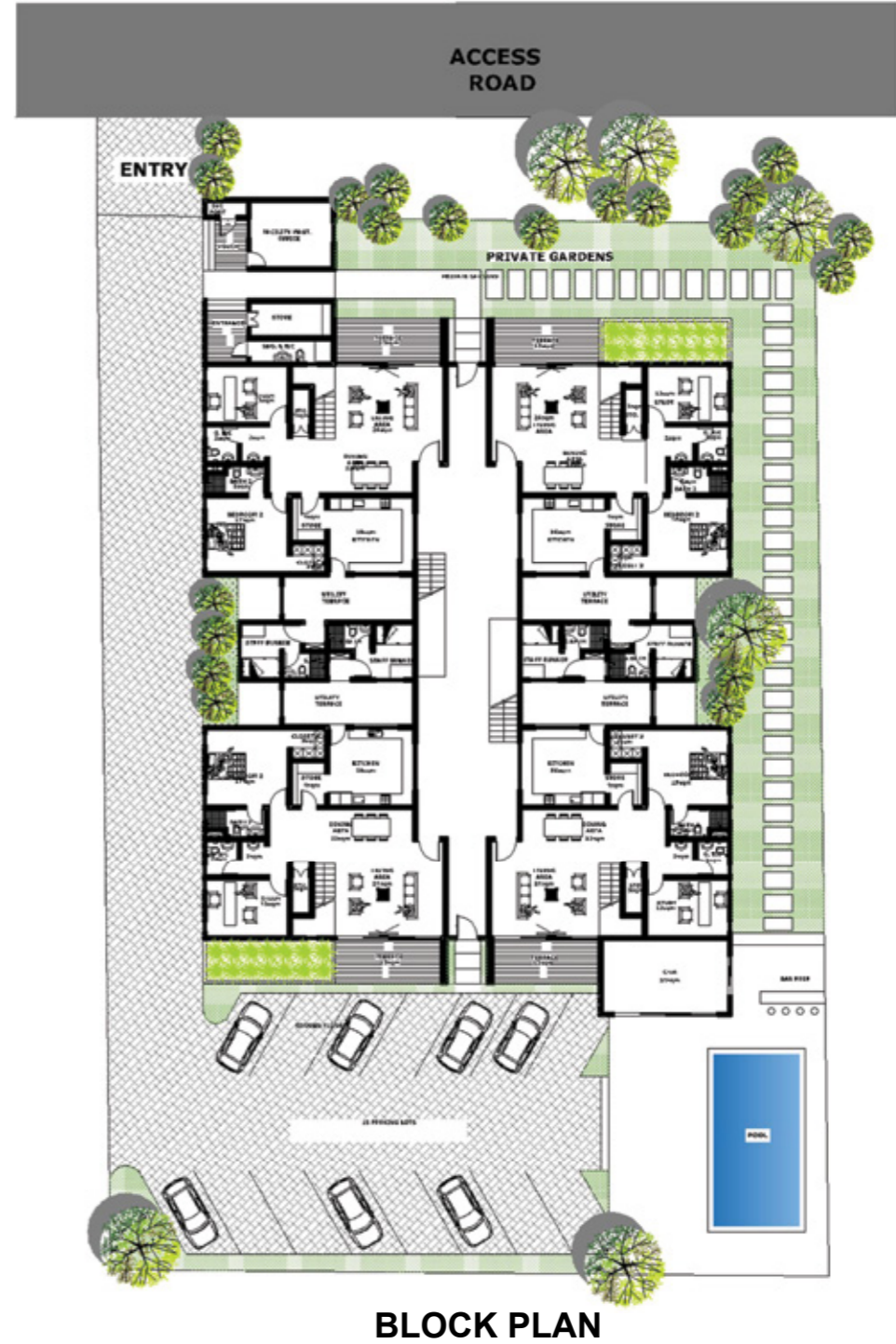
17

*Images displayed are indicative of the style only and the finished product may differ



18

*Images displayed are indicative of the style only and the finished product may differ



BLOCK PLAN



GROUND FLOOR

LEGEND

- 4 bedroom duplex + staff bunker
- Staff bunkers
- Facilities Manager's Office + Security Point
- Gym



FIRST FLOOR

LEGEND

- 4 bedroom duplex + staff bunker



PENTHOUSE

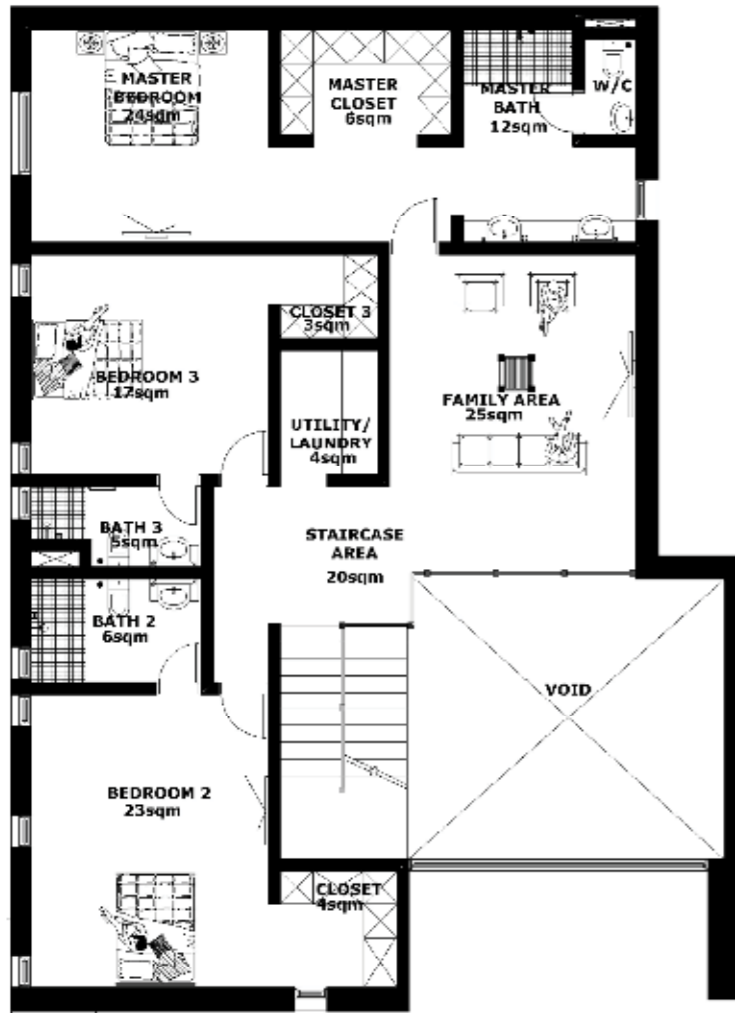
LEGEND

- 2 Bedroom Penthouse
- 1 Bedroom



DUPLEX - GROUND FLOOR

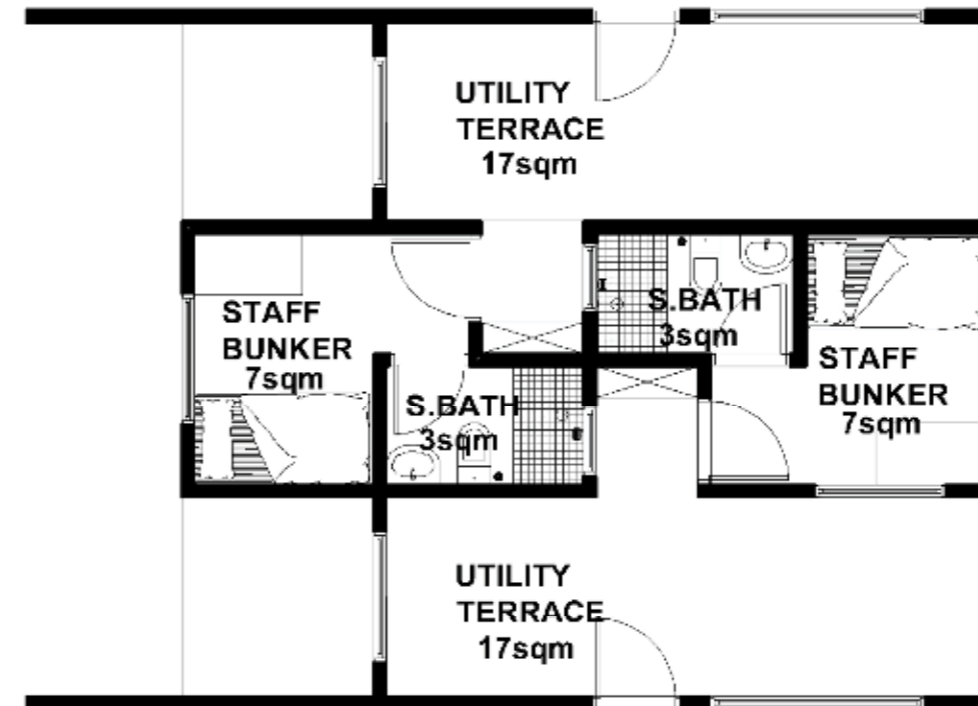
SPACE	AREA (m ²)
KITCHEN	18
KITCHEN STORE	4
LIVING AREA	24
DINING AREA	22
STORE	3
G. WC + SINK	5
BATH 2	5
BEDROOM 2 + CLOSET	20
STUDY	13
TERRACE	13
TOTAL	127



DUPLEX – FIRST FLOOR

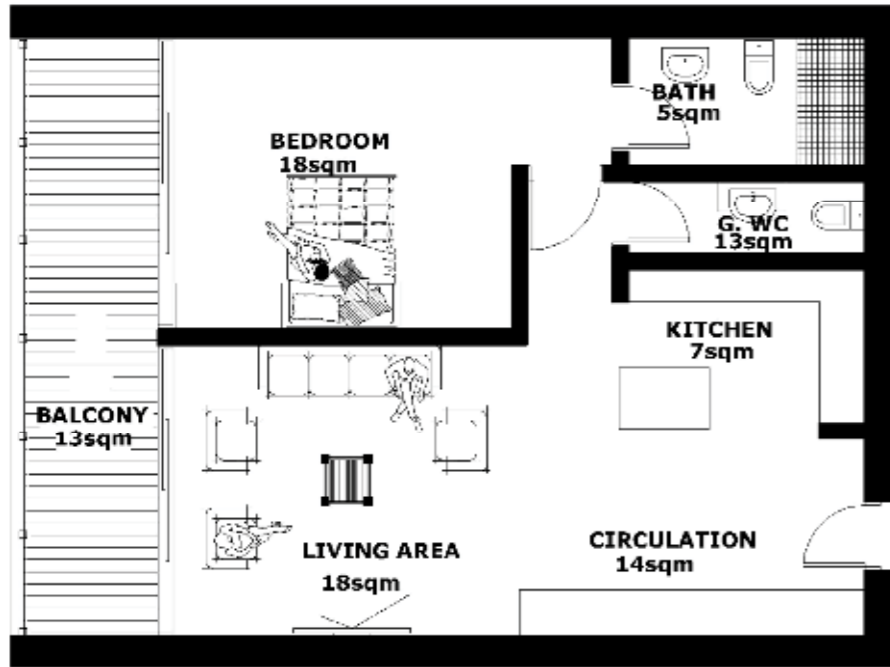
SPACE	AREA (m ²)
FAMILY AREA	25
MASTER BEDROOM	24
MASTER CLOSET	6
MASTER BATH	12
BEDROOM 3 + CLOSET	20
BATH 3	5
UTILITY/LAUNDRY	4
BEDROOM 2 + CLOSET	27
BATH 2	6
STAIRCASE AREA	20
TOTAL	149

TOTAL DUPLEX FLOOR AREA = 276 SQM



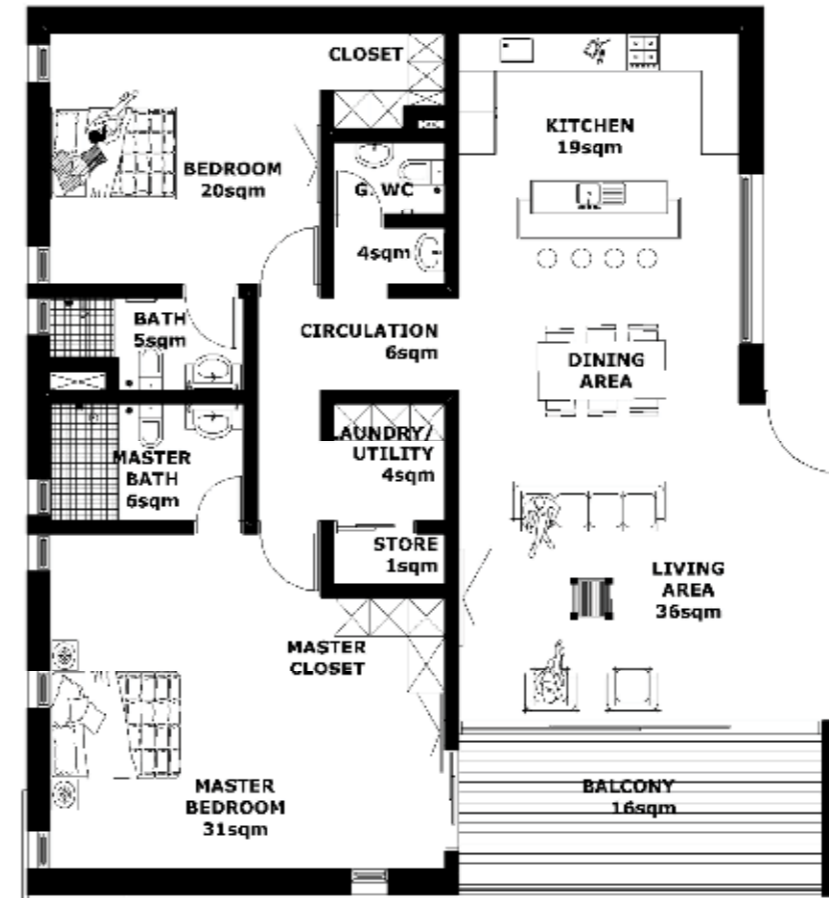
STAFF

SPACE	AREA (m ²)
UTILITY TERRACE	17
STAFF BUNKER	7
STAFF BATH	3
TOTAL PER UNIT	27



1 BEDROOM PENTHOUSE

SPACE	AREA (m ²)
BEDROOM	18
BATH	5
G. WC	3
KITCHEN	7
CIRCULATION	14
BALCONY	13
TOTAL	60



2 BEDROOM PENTHOUSE

SPACE	AREA (m ²)
KITCHEN	19
LIVING / DINING	38
CIRCULATION	6
G. WC	4
BEDROOM + CLOSET	20
BATH	5
MASTER BEDROOM + CLOSET	31
MASTER BATH	6
LAUNDRY / UTILITY	4
STORE	1
BALCONY	16
TOTAL	150

Specifications

KITCHENS

Howdens Balham Gross fully fitted kitchen with Corian worktops and soft close doors and drawers
Multifunction stainless steel oven
Stainless steel wall mounted extractor fan to each home
Integrated microwave
Integrated fridge/ freezer to each home
Fully integrated dishwasher
Integrated washing machine

BATHROOM

Duravit sanitaryware with chrome taps
Duravit bath to bathroom and master en-suite (if applicable)
Shower with square fixed showerhead
Shower glass

HEATING, ELECTRICAL AND LIGHTING

Ariston water heating systems to all bathrooms
Downlights to all rooms
Telephone points to family/dining area and all bedrooms
TV points to all bedrooms and kitchen/living/family area

INTERIOR FINISHES

Matt paint finish to all rooms
Satin paint finish to internal joinery
Classic Veincut and Light Picasso Travertine for all other Areas
Built in Wardrobes

INTERNAL DOORS

Industrial Veneer -flush door with groove 4

EXTERNAL DOORS

M & T hard wood External Doors
Cylindrical Lock with Door Handle and Stainless
Steel Butterfly Hinges

SECURITY

Audio entry phone linked to each home
High security front entrance door with multipoint locking system
Smoke detectors fitted to hallways, all bedrooms and family area
CCTV Camera

WINDOWS

Glazed aluminum windows with lockable fastener and mosquito proof netting (where applicable)

COMMUNAL AND EXTERNAL AREAS

Tiled communal entrance and hallways
Staircases with metal balustrades
Dedicated car park
Landscaped gardens
Backup generator
Pressurized water supply
Swimming Pool
Lift
Gym

DEVELOPMENT PARTNERS



GHANA

No.6 Sir Arku Korsah Road
Airport Residential Area -Accra
P.O. Box 7451 Accra North
P: +233 (0) 302 731034/ 573 899899

Toll Free: +233 (0) 277 277010
info@imperialhomesghana.com

UNITED KINGDOM

3rd Floor, 120 Baker Street
London, W1U 6TU
P: 00442077540364

USA

Tel: +1667 228 7256
www.imperialhomesghana.com