

# THE OAK

## APARTMENTS

 **IMPERIAL**  
HOMES  
*A Signature of Luxury*



## LOCATION

# THE OAK APARTMENTS

North Legon Residential Area, Accra

The Oak Tree Apartments have changed the North Legon property landscape. Its' beautiful combination of glass, stone, steel and concrete surfaces house 8 spacious, well laid out, modern, 2 and 3 bed apartments and a penthouse. Large glass doors open out to terraces and afford great views.

The stunning penthouse is an expansive, open plan, 3 bed luxury suite with a large terrace.

Like all Imperial Homes' developments, the Oak Tree is finished and equipped to the highest standards inside and out. Its residents will enjoy the best of contemporary living in a blissful setting.

Uninterrupted water and electricity supply from reliable back-up systems, 24 hour security plus Imperial Homes' tried and tested management and maintenance teams ensure stress free living.

**AN ELEGANT FUSION OF  
GLASS, STEEL AND STONE**



**BEAUTIFUL LIGHTING THROUGHOUT**

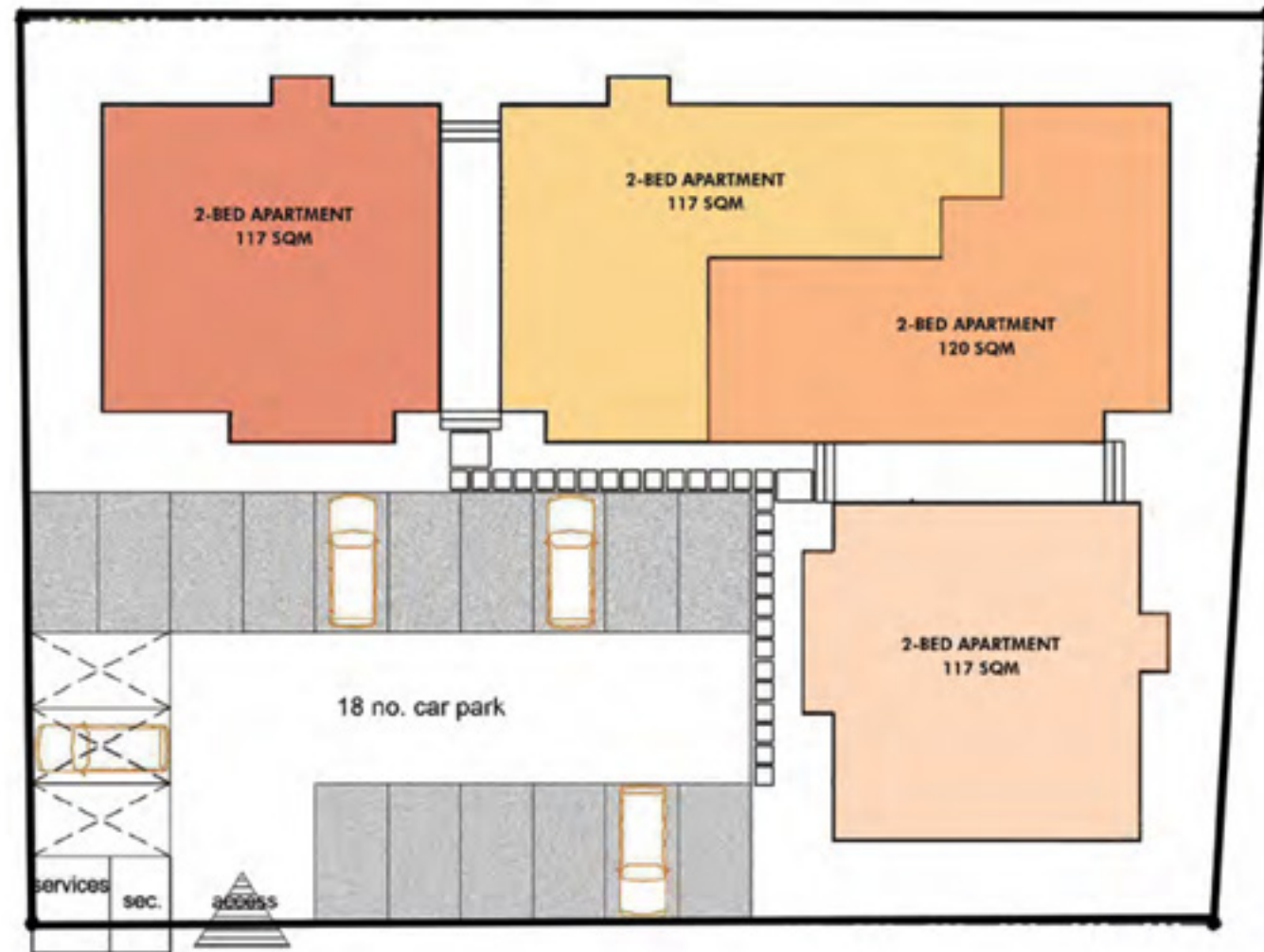


**..STUNNING CONTEMPORARY LINES  
CREATE A TIMELESS MASTERPIECE**

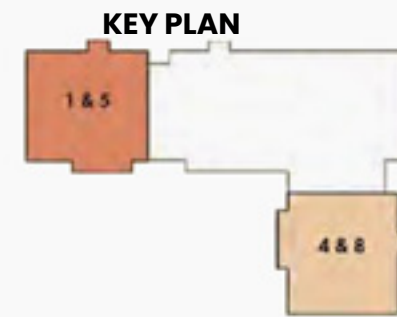




# BLOCK PLAN



# FLOOR PLAN



## TYPE 1

2 BEDROOM APARTMENT  
(1,4,5 & 8)

TOTAL SIZE : 117sqm



# FLOOR PLAN



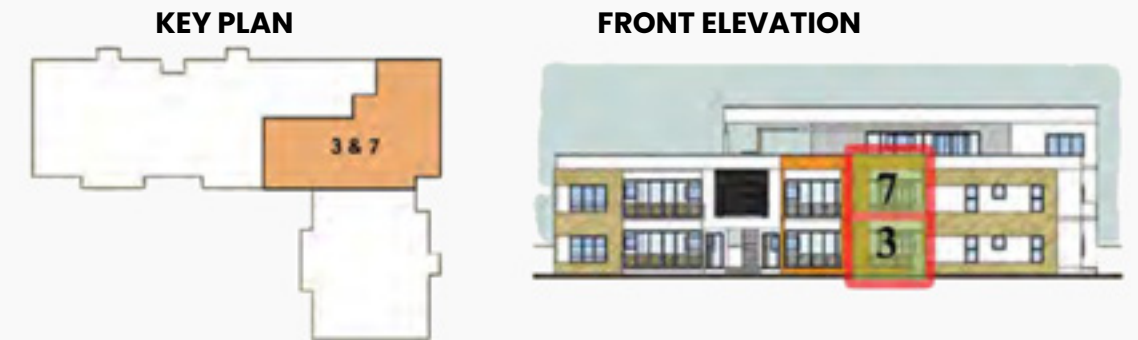
## TYPE 2

2 BEDROOM APARTMENT  
(2 & 6)

TOTAL SIZE : 120sqm



# FLOOR PLAN



## TYPE 3

2 BEDROOM APARTMENT  
(3 & 7)

TOTAL SIZE : 117sqm





# FLOOR PLAN

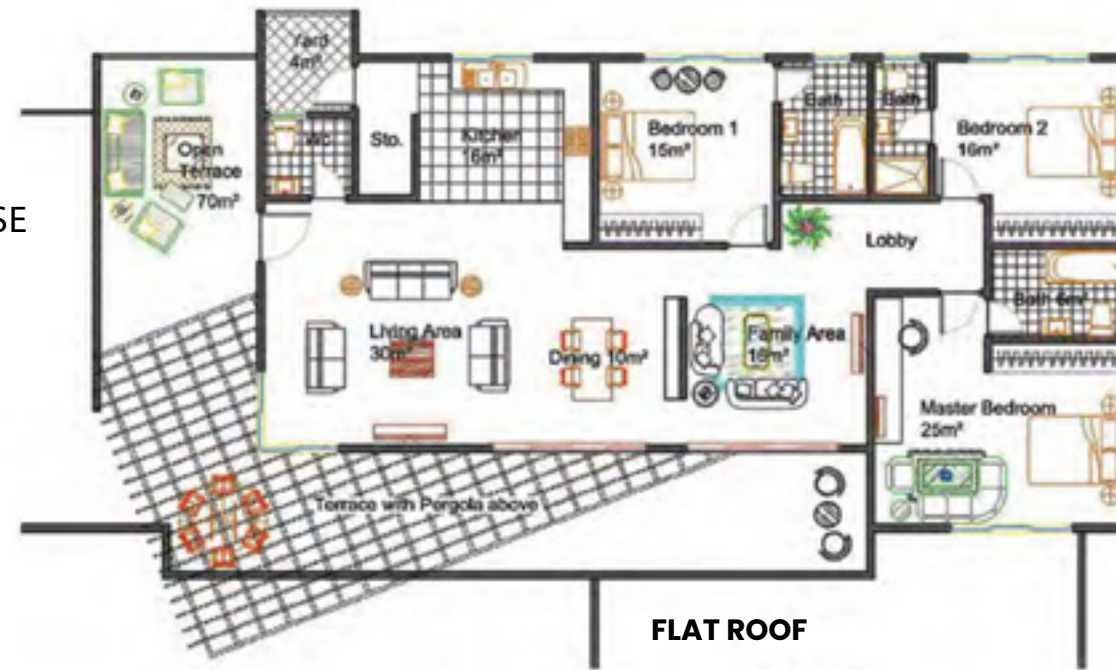
KEY PLAN



## TYPE 4

3 BEDROOM PENTHOUSE  
(9)

TOTAL SIZE : 230sqm







## STANDARD FITTINGS AND SPECIFICATIONS

These are the standard fittings and specifications for each of the apartments

### KITCHENS

Howdens Saponetta Type Fitted Kitchen units and laminated worktops with Oak Effect

### RANGE OF APPLIANCES

Lamona Stainless Steel Multi-Function Fan Oven  
Lamona Professional 4 Burner Gas Hob  
Lamona Stainless and Glass Chimney Extractor  
Lamona Ullswater 1.5 Bowl Sink  
Lamona Chrome Laveno Single Lever Taps

### BATHROOMS

White sanitary ware with water conservation features  
Half height wall tiling around the bath to main bathroom  
Full height wall tiling around shower enclosure to en-suite (where applicable)  
Tiled splash back to wash hand basins to main bathroom en-suite and cloakroom (where applicable)  
Optional Shower enclosures to en-suites Bath with chrome pillar taps  
Extractor fan to main bathrooms (where applicable)

### WINDOWS

Single-glazed aluminum windows with lockable fasteners and mosquito proof netting (where required)

### DETAILS OF FINISHES

Panel Shaker internal doors with dark satin finishes  
Panel M&T Hardwood external doors with dark satin finishes  
White painted walls and smooth white plasterboard ceilings  
Dark wood skirting boards and architraves  
Lugano Satin Nickel Locks for all internal rooms  
Orta Stain Nickel Locks for all external doors

### LIGHTING & ELECTRICAL

Detta slim line white sockets and switches  
TV points in all rooms  
Strategically located Telephone point to all rooms  
Smoke detectors with battery back up in all rooms  
Energy efficient lighting to selected rooms.

### FLOORING

Porcelain Tiles

### COMMUNAL & EXTERNAL AREAS

Paved Walk ways  
Landscaped gardens  
Pressurized water supply from borehole/reservoir

### OPTIONAL FITTINGS AND FINISHES

#### Kitchens

A choice of two upgrade packs including integrated appliances upgrade oven, hob and chimney hood and many more items are available Granite work tops, solid wood 40mm and upgrade kitchen tap

Upgrade kitchen front doors

#### Air-conditioning and Heating

Nasco /Samsung split individual air-condition units  
Ariston Water heating system to all bathrooms

#### Flooring

Various types of flooring are available including carpets, laminate flooring, ceramic and porcelain tiles, vinyl, wood, marble and granite

#### Wardrobes

Built-in sliding wardrobes in a choice of different colors and designs to specific bedrooms.

#### Miscellaneous items

External taps to front or rear of House (dependant on kitchen location)  
Upgrade ironmongery  
Upgrading sockets and switches  
Upgrade internal doors to half glazed doors or fully glazed doors

## DEVELOPMENT PARTNERS

\*Images displayed are indicative of the style only and the finished product may differ



#### **GHANA**

No.6 Sir Arku Korsah Road  
Airport Residential Area-Accra  
P.O.Box 7451 Accra North  
P: +233 (0) 302 731034 / 573 899899  
P: +233 (0) 507 901635  
Toll Free: +233 (0)277 277010  
[info@imperialhomesghana.com](mailto:info@imperialhomesghana.com)

#### **UNITED KINGDOM**

Penhurst House, 352-356 Battersea  
Park Road, Office 17, London, SW11  
3BY  
P: +44 20 3735 8977

#### **USA**

P: 001- 470-884-2966  
[www.imperialhomesghana.com](http://www.imperialhomesghana.com)